



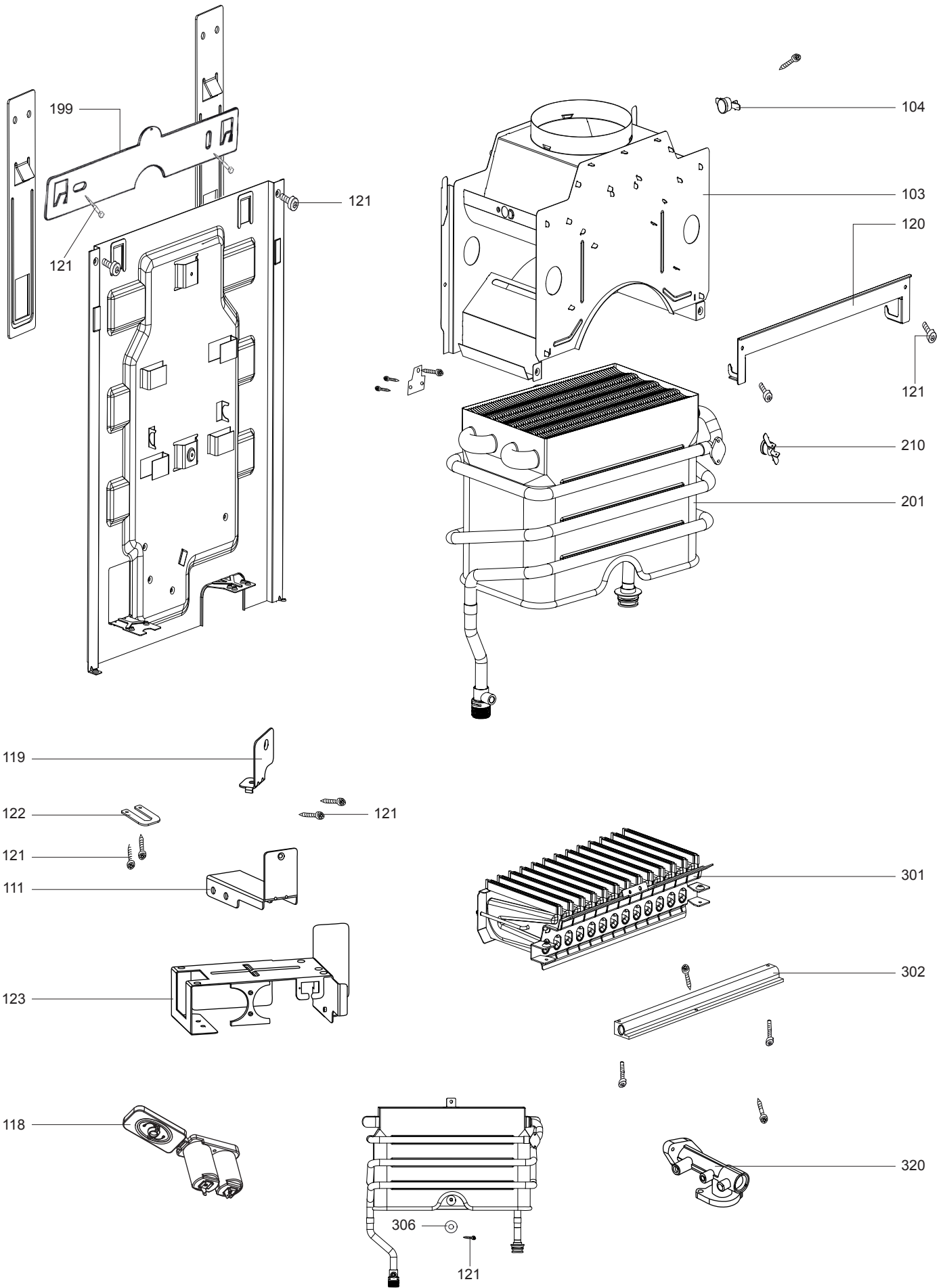
SPARE PARTS EXPLODED VIEW
INSTANTANEOUS GAS WATER HEATERS
Model
FAST R ONM

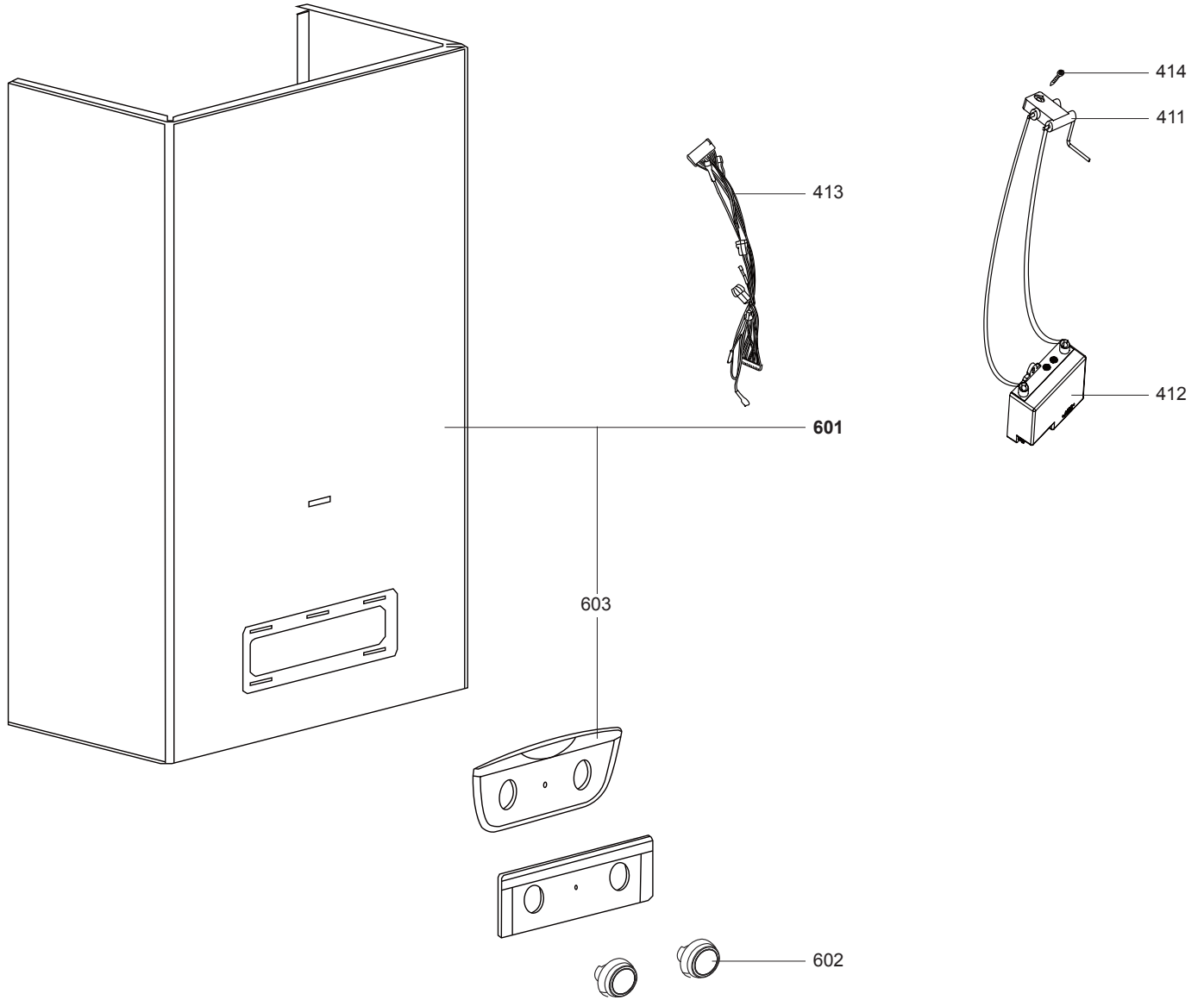
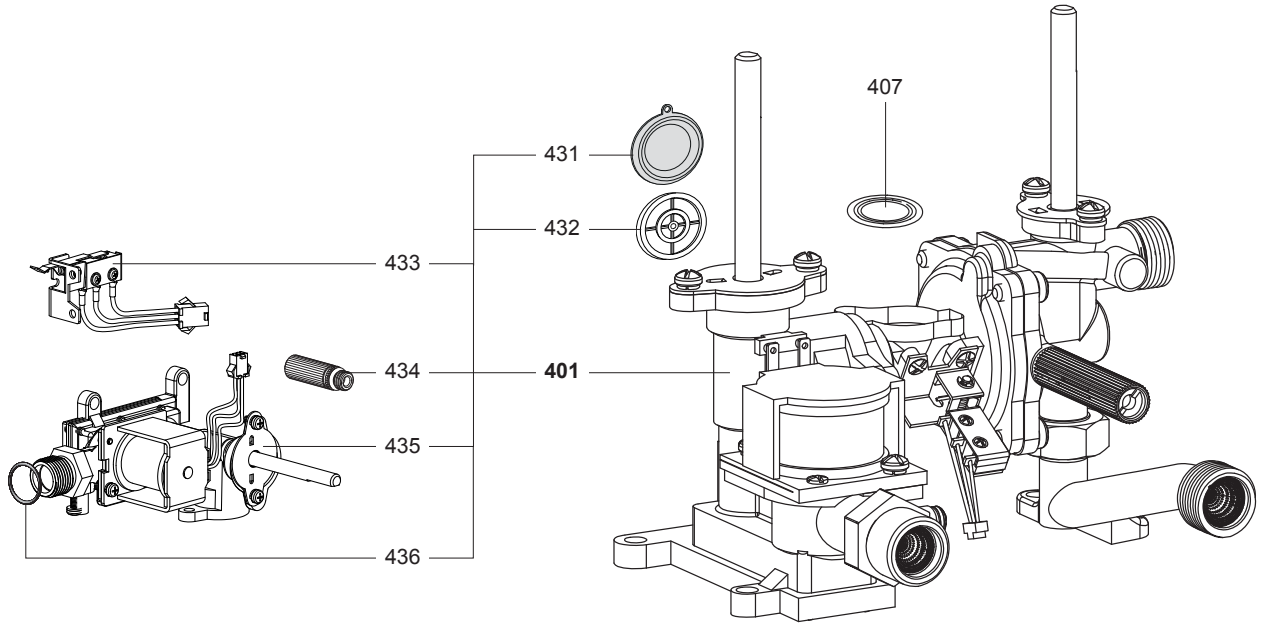
R8217585-06 - 04/07/2024

FAST R ONM

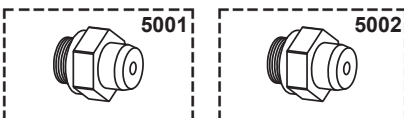
Instantaneous Gas Water Heaters

1	3632303	FAST R ONM 11 NG	07-2016	12-2023
2	3632304	FAST R ONM 11 LPG	07-2016	12-2023
3	3632313	FAST R ONM 11 NG EU	07-2016	03-2021
4	4332004	FAST R ONM 11 NG UA	04-2024	-
5	3632314	FAST R ONM 11 LPG EU	07-2016	-
6	3632307	FAST R ONM 14 NG	07-2016	12-2023
7	3632308	FAST R ONM 14 LPG	07-2016	12-2023
8	3632312	FAST R ONM 14 NG RU	07-2016	-
9	3632315	FAST R ONM 14 NG EU	07-2016	03-2021
10	3632316	FAST R ONM 14 LPG EU	07-2016	-
Col	Reference	Model type	Begin	End





5000



☉⇒	Description	Manf. Pt. N	Type																			From	to
				1	2	3	4	5	6	7	8	9	10	11	12	13	14	15	16	17	18		
0004	PLASTIC PANEL /AR/FAST R ONM	65153128				•	•			•													
0401	GAS VALVE MEC 14 GAS/WATER	65153119-01								•				•									
	GAS VALVE WATER RU 14	65153121-01												•									
	GAS WATER VALVE GPL/FAST R ONM 11	6500759900			•			•															
	GAS WATER VALVE NG /FAST R ONM 11	6500761400		•		•	•																
	GAS-WATER VALVE (LPG-14L)	65153120-01									•							•					
0407	O-RING	65152055		•	•	•	•	•	•	•	•	•	•	•	•	•	•	•	•				
0411	IGNITION ELECTRODE (double)	65152497		•	•	•	•	•	•	•	•	•	•	•	•	•	•	•	•				
0412	PCB IGNITION	65156405		•	•	•	•	•	•	•	•	•	•	•	•	•	•	•	•				
0413	CABLE / RU /FAST R ONM	65153123		•	•	•	•	•	•	•	•	•	•	•	•	•	•	•	•				
0414	TAPPING SCREW CBLSX D4,2X9,5	61010125			•	•	•	•	•	•	•	•	•	•	•	•	•	•	•				
0431	MEMBRANE DERMALIS 11L	65153313		•	•	•	•	•															
	MEMBRANE DERMALIS 14L	65153314								•	•	•	•	•	•	•	•	•	•				
0432	PLASTIC PLATE 11L	65153311		•	•	•	•	•															
	PLASTIC PLATE 14L	65153312								•	•	•	•	•	•	•	•	•	•				
0433	MICROSWITCH	65153620		•	•	•	•	•	•	•	•	•	•	•	•	•	•	•	•				
0434	SAFETY VALVE	65153618		•	•	•	•	•	•	•	•	•	•	•	•	•	•	•	•				
0435	11L GAS VALVE NG/ BRIDGE WATER-GAS VALVE	65153613		•		•	•																
	14L GAS VALVE LPG	65153617									•								•				
	GAS VALVE LPG 11L	65153614			•			•															
	GAS VALVE NG 14L	65153615								•		•	•										
0436	O-RING 28x1.9	65153619		•	•	•	•	•	•	•	•	•	•	•	•	•	•	•	•				
0437	SOLENOID (WATER-GAS VALVE)	6500656000		•	•	•	•	•	•	•		•	•	•									
	SOLENOID (WATER-GAS VALVE)	6500656100									•								•				
0601	FRONT COVER/FAST R ONM 11	65155779		•	•	•	•	•															
	FRONT COVER/FAST R ONM 14	65153124								•	•	•	•	•	•	•	•	•	•				
0602	KNOB /AR/FAST R ONM	65153126		•	•	•	•	•	•	•	•	•	•	•	•	•	•	•	•				
0603	PLASTIC PANEL /AR/FAST R ONM	65153128		•	•	•	•	•	•	•	•	•	•	•	•	•	•	•	•				
5000 ACCESSORIES																							
5001	GAS TRANSF NG TO LPG 11L	65153317		•		•																	
	GAS TRANSF NG TO LPG 14L	65153318								•			•										
5002	GAS TRANSF LPG TO NG 11L	65153315			•			•															
	GAS TRANSF LPG TO NG 14L	65153316									•								•				

LIST OF THE ABBREVIATIONS

HW	: Hot water.
CW	: Cold water.
C	: Ceramic resistance (normal heating).
Ca	: Ceramic resistance (accelerated heating)
TP	: Immersion heater.
1F	: With fittings.
2F	: Without fittings.
3F	: With fittings and another outlet connection.
AMI	: With mixing valve.
SMI	: Without mixing valve.
PUISS	: Power of th appliance.
PN	: Appliance with normal pression.
LP	: Appliance with low pression.
PV	: Appliance with variable power.
PF	: Appliance with fixed power.

IDENTIFICATION PLATE

SERIAL NUMBER

5 Characters :	FD 8 61	(from 01/98 to 12/99)	Month of manufacture : from 61 to 72 → January to December
			Year of manufacture : 8 → 1998 9 → 1999
OR			
5 Characters :	FD 0 81	(from 01/00)	Month of manufacture : from 81 to 92 → January to December
			Year of manufacture : 0 → 2000 1 → 2001 2 → 2002 etc ...
6 Characters :	FD 83 05		Month of manufacture
			Year of manufacture : 83 → 2003 84 → 2004